

Roadway Inspection Technology



Traditional

Dangerous site conditions

Lane closures

Inaccurate estimations of repair quantities

Time-consuming field inspections

Subjective evaluations



NEXCO Technology

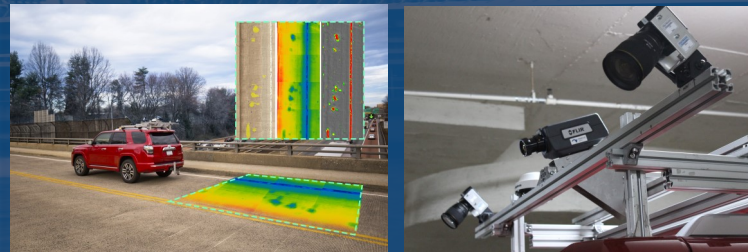
Safe inspection conditions

Rapid data acquisition

Accurate measurements

Asset management-friendly

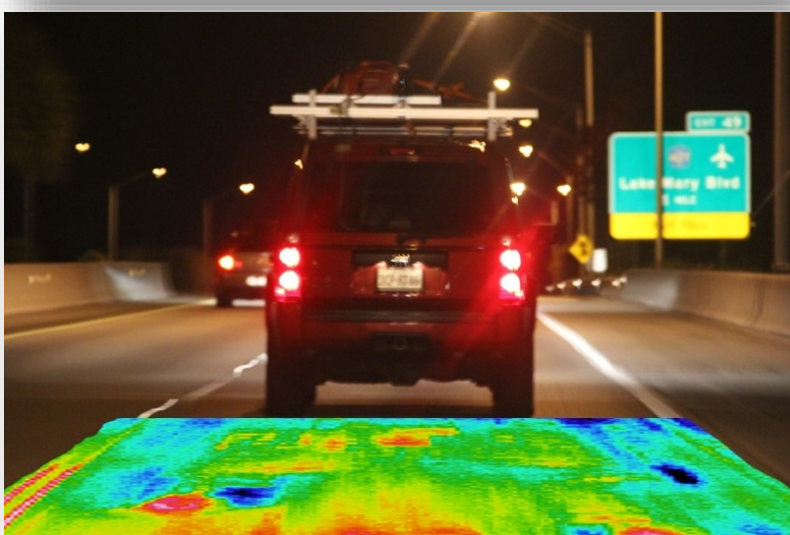
Proactive decision-making



Benefits

The duration and total cost of road repair can suffer from unknown deficiencies and faulty records. Data from other comparable systems also can be unwieldy and hard to access.

Our system puts doubts about the current conditions of roadways to rest with detailed and customized deficiency maps which are accessible online through NEXCO's web reporting platform.





The Technology

Using high-performance sensors, we help reduce the guesswork that goes into conventional repair/rehabilitation estimations for roadways. Our mobile road scanning systems, DTSS and Smart Eagle, pass over roads, bridges, parking lots, and airport runways at highway speeds (that's any speed from 10 to 70mph!) The systems detect cracking at 0.3mm widths and above, IRI, rutting, and profiling with 1mm accuracy.

Accreditations

Ask Kurabo and/or Eng. Shikoku for a list of major clients for now?

NEXCO - West USA
8300 Boone Blvd. Suite 260
Vienna, VA 22182

+1 (703) 734 - 0281
info@w-nexco-usa.com
www.w-nexco-usa.com